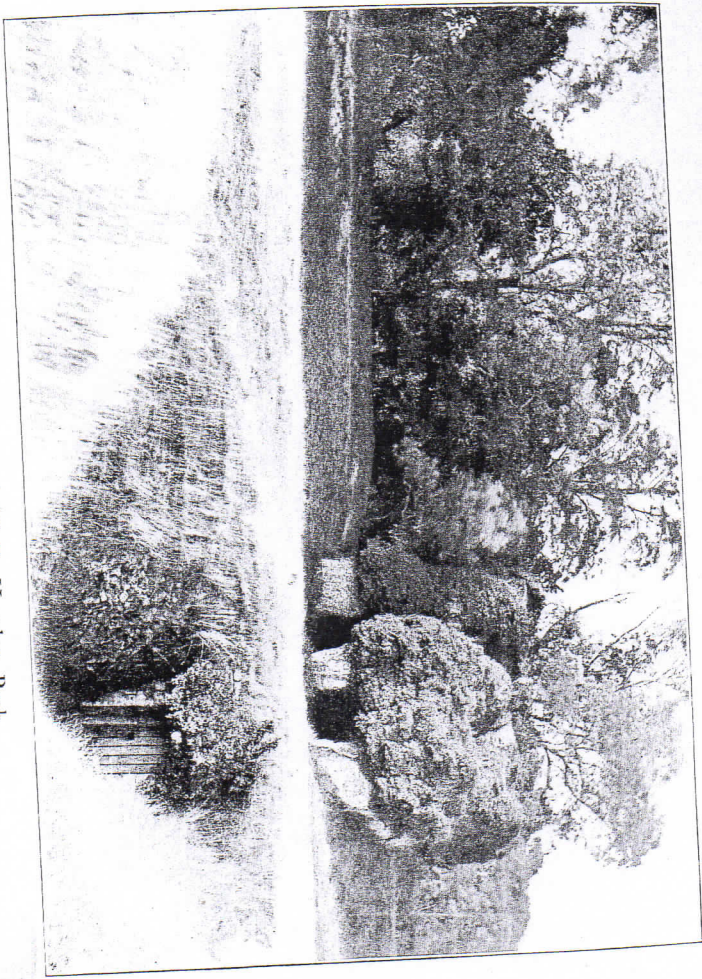


Merdon Castle and Well, Hursley Park.

1903



Lowell for the conjectural

the castle.

op had completed this much safe, but he would not be

rdly have room in his castle and he could not command

except towards the south; k was to make an embank-

the outer side of it. It was nicle, jutting out as it were

protecting a sufficient space of encamp.

ny forcing their way into this, retreat into the castle by the

entrance was on the east side, ect this and the back of the

eat the northern side, another de and finished with a parapet.

his being carried by the enemy, sible for the defenders in the

e castle to run round the castle y the main gateway, he built

(exactly opposite to the ruin), and divided from it only by

On either side of the tower— timent across, therefore, at right